

From: Hirsch, David - MRP-APHIS

Sent: Tuesday, October 24, 2023 10:15 AM

Subject: FW: UPDATE: change to EU requirements for hard maple veneer (updated October 24)

Good news on the hard maple veneer issue, please see the message below.

Regards,

David J. Hirsch

Export Certification Specialist for PA, NJ, NY, CT, MA, RI, VT, NH, ME

USDA-APHIS-PPQ

53 North Sixth Street, Rm 203

New Bedford, MA 02740

Office: 508-997-5955

Mobile: 508-965-1940

david.j.hirsch@usda.gov

From: Hirsch, David - MRP-APHIS

Sent: Tuesday, October 24, 2023 10:10 AM

Subject: FW: UPDATE: change to EU requirements for hard maple veneer (updated October 24)

Bcc to all ACOs in PA, NJ, NY, CT, MA, RI, VT, NH, ME:

Good morning,

We have some good news on the issue of hard maple veneer exports to the EU.

An industry trade group in the EU was able to obtain a letter from the EU Commission which acknowledges misclassification of hard maple veneer in their regulations and that they are in the process of fixing it.

PEXD has been updated based on this letter but exporters shipping to France and Spain may still have entry issues until the Member States approve the changes and the EU publishes the amended regulation.

Hard maple veneer originating in ALL U.S. states can now be exported to the EU, and the wood or wrapping must be marked both "KD" and "HT".

The Phytosanitary Certificate should include the following 2 additional declarations:

Consignment complies with Annex VII, point 85 of Commission Implementing Regulation (EU) 2019/2072.

The wood has undergone kiln-drying to below 20 % moisture content, expressed as a percentage of dry matter, achieved through an appropriate time/temperature schedule and indicated by the mark KD.

Consignment complies with Annex II, 1, B (1) option (b) of EC Plant Health Directive 2015/893/EC.

The wood is debarked and has undergone an appropriate heat treatment to achieve a minimum temperature of 56 C for a minimum duration of 30 continuous minutes throughout the entire profile of the wood including at its core. The wood or its wrapping have been marked HT.

Please share this update with your ACOs and industry contacts.

Acer saccharum

Commodity Parts:

- [Veneer](#)

Veneer

Last Updated: October 24, 2023

Phytosanitary Certificate (PC) is required.

Additional Declaration

Consignment complies with Annex VII, point **85** of Commission Implementing Regulation (EU) 2019/2072.

The wood has undergone kiln-drying to below 20 % moisture content, expressed as a percentage of dry matter, achieved through an appropriate time/temperature schedule and indicated by the **mark KD**.

AND

Consignment complies with Annex II, 1, B (1) **option (a)** of EC Plant Health Directive 2015/893/EC.
The wood originates in a pest-free area.

OR

Consignment complies with Annex II, 1, B (1) **option (b)** of EC Plant Health Directive 2015/893/EC.

The wood is debarked and has undergone an appropriate heat treatment to achieve a minimum temperature of 56 C for a minimum duration of 30 continuous minutes throughout the entire profile of the wood including at its core. The wood or its wrapping have been **marked HT**.

Additional Information

The production of veneer sheets utilizes a heating process that meets the requirements of the 3rd additional declaration in this summary.

"Consignment complies with Annex II, **B (1) option (b)** of EC Plant Health Directive 2015/893/EC. The wood is debarked and has been heat treated to achieve a minimum temperature of 56 C for a minimum duration of 30 continuous minutes throughout the entire profile of the wood, including at its core."

Thank you,

David J. Hirsch
Export Certification Specialist for PA, NJ, NY, CT, MA, RI, VT, NH, ME
USDA-APHIS-PPQ
53 North Sixth Street, Rm 203
New Bedford, MA 02740
Office: 508-997-5955
Mobile: 508-965-1940
david.j.hirsch@usda.gov

From: Hirsch, David - MRP-APHIS

Sent: Thursday, September 7, 2023 8:39 AM

To: APHIS-PPQ Ops Exports

Cc: APHIS-PPQ OPS Trade; Jones, John - MRP-APHIS

Subject: UPDATE: change to EU requirements for hard maple wood (including veneer sheets)

Good morning,

Please share this important update with ACOs and industry.

Up until recently, we could certify hard maple (*Acer saccharum*) veneer with an AD that it had been kiln-dried to satisfy the EU's pest concern of sapstreak disease (*Davidsoniella virescens*).

The EU countries have now reached a consensus and are requiring area freedom from *Davidsoniella virescens* for both hard maple logs (intended for veneer production) **and sliced veneer sheets**.

The commodity summary for *Acer saccharum* "Wood (Including veneer)" has been updated in PExD.

This means that hard maple logs, and veneer sheets produced from those logs, originating in states listed by EPPO as having *Davidsoniella virescens* cannot be certified to the EU.

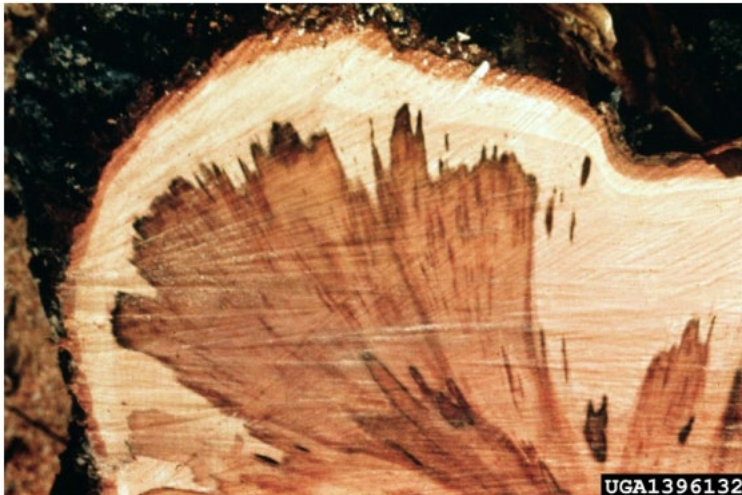
***Acer saccharum* logs (intended for veneer production) and veneer sheets cannot be certified for export to the EU if they originate in one of these 5 states: NY, VT, MI, WI, NC.**

<https://gd.eppo.int/taxon/CERAVI/distribution>

The State of origin must be listed on the PC in Block 13 for shipments of hard maple logs and veneer to the EU.

For shipments of logs originating in states where *Davidsoniella virescens* is not listed as present, it is still important to look for stain during inspections.

Images of sapstreak disease stain:





Thank you,

David J. Hirsch
Acting Commodity Specialist for Forest Products
USDA-APHIS-PPQ
53 North Sixth Street, Rm 203
New Bedford, MA 02740
Office: 508-997-5955
Mobile: 508-965-1940
david.j.hirsch@usda.gov